

CITY OF ASAHIKAWA FLOOD HAZARD MAP

March, 2019

August, 2019 Flood inundation assumption area partial change

Introduction

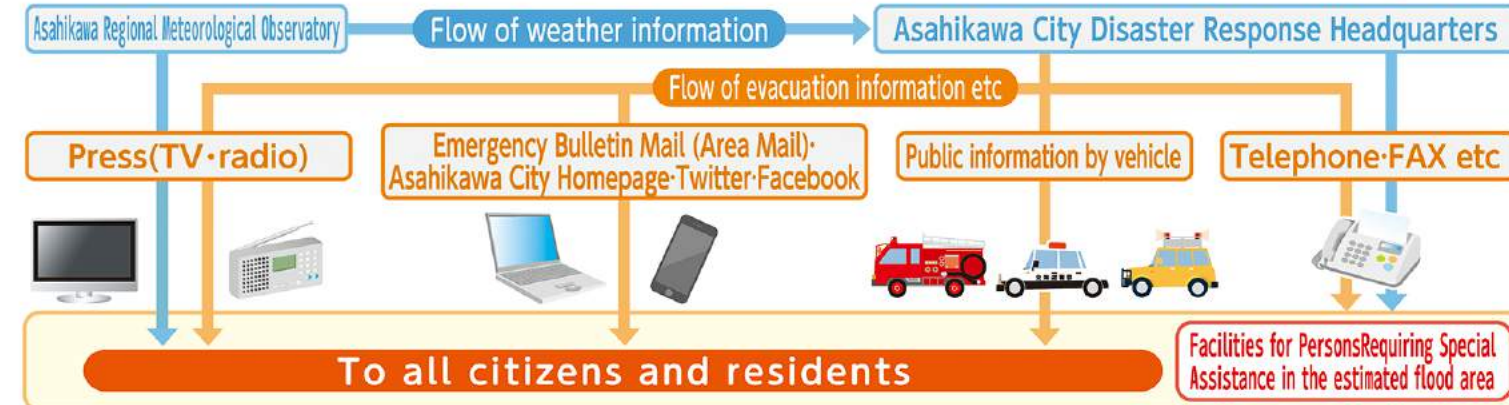
This map was created in order to check evacuation routes etc. from day to day in case the river floods. It is made by simulating the state of flooding estimated when the river to the right overflows due to heavy rain which occurs once in 1000 years. Therefore, it does not mean that such flooding always occurs.

River name and estimated rainfall list

Ishikari River	Ishikari River upstream basin 72-hour total rainfall 348 mm	Etanbetsu River	Etanbetsu River Basin 24-hour total rainfall 597 mm
Chubetsu River	Chubetsu River Basin 72-hour total rainfall 457 mm	Kurama River	Kurama River Basin 72-hour total rainfall 515 mm
Biei River	Biei River Basin 72-hour total rainfall 422 mm	Pippu River	Pippu River Basin 24-hour total rainfall 515 mm
Ushibetsu River	Ushibetsu River Basin 72-hour total rainfall 465 mm	Pon River	Pon River Basin 24-hour total rainfall 5275 mm
Osarape River	Osarape River Basin 72-hour total rainfall 476 mm	Papan River	Papan River Basin 72-hour total rainfall 484 mm
Bebetsu River	Bebetsu River Basin 72-hour total rainfall 477 mm	Ushibetsu River	Ushibetsu River Basin 72-hour total rainfall 483 mm
Hokkaido River	Hokkaido River upstream basin 72-hour total rainfall 477 mm		

* Created based on estimated flood area map of Asahikawa development

Transmission of weather information, evacuation information, etc



Evacuation information

If there is a possibility of damage due to a disaster, evacuation advice etc. will be issued from the city. If you feel danger, please evacuate voluntarily even before the evacuation recommendation etc is issued.

Evacuation preparation order, start evacuation of elderly etc	When the possibility of a disaster increases For people who need time to evacuate such as the elderly, start evacuation now. Others, should prepare to evacuate at any time.
Evacuation advisory	When the possibility of damage caused by a disaster increases Start evacuation promptly. If life is put in danger by evacuation, evacuate to a safer place near or inside your home.
Evacuation order (emergency)	When the risk of the occurrence of the damage caused by a disaster is greatly increased Evacuate immediately. If life is put in danger by evacuation, evacuate to a safer place near or inside your home.

Water level and danger level of river



Asahikawa city flood hazard map

On the city homepage, an expanded flood hazard map, and facilities for Persons Requiring Special Assistance in the estimated flood area, have been posted.

Contact: Asahikawa City Disaster Prevention Division Disaster Management Division Phone 0166-26-1111

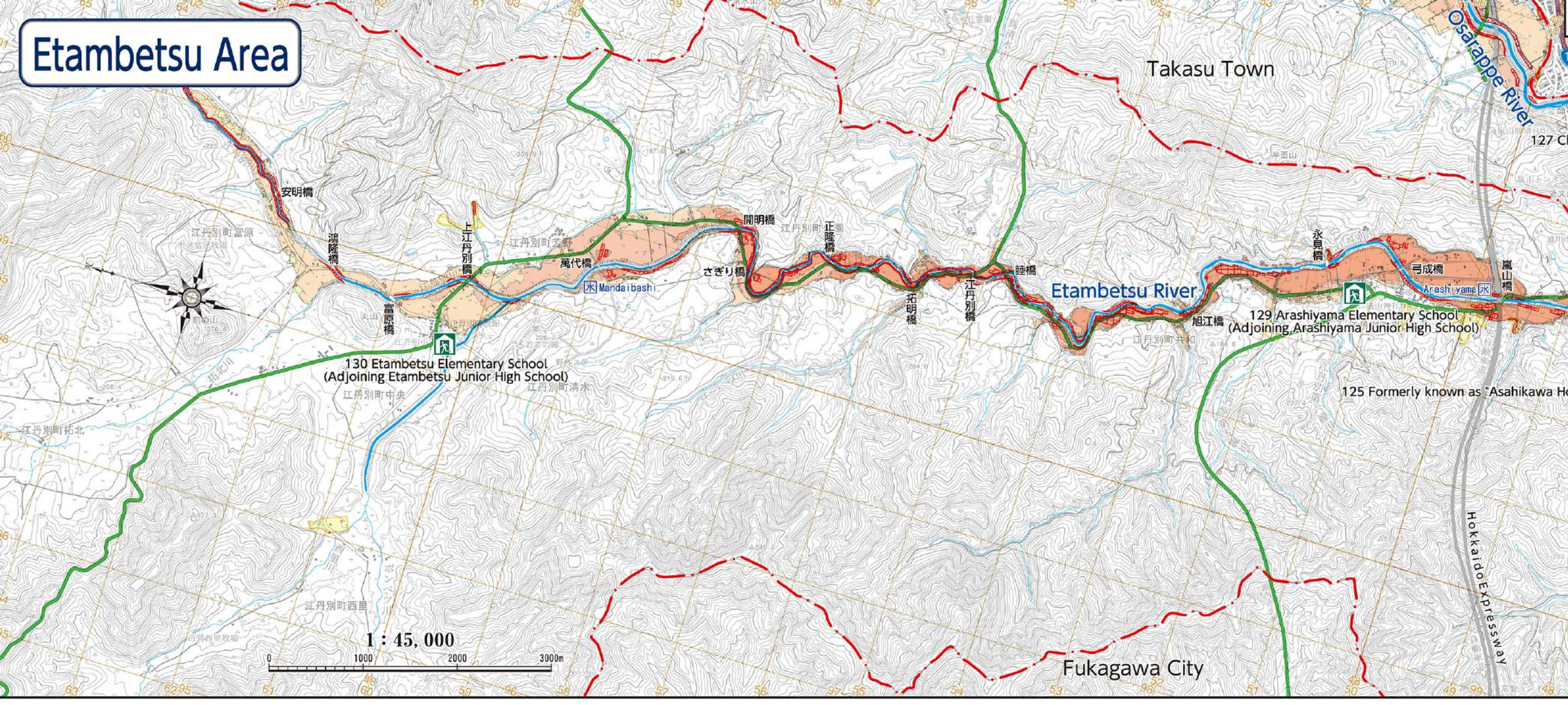
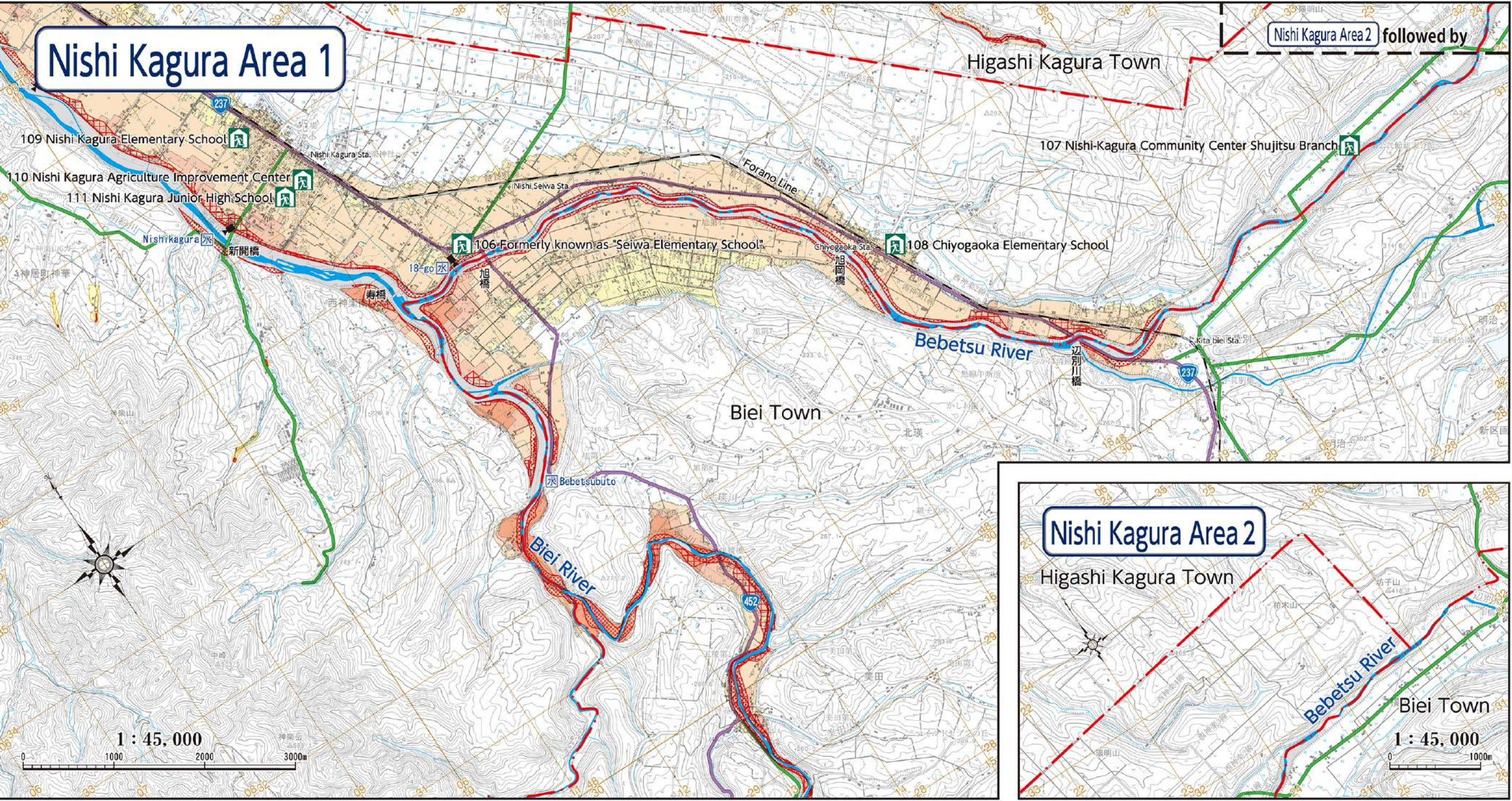
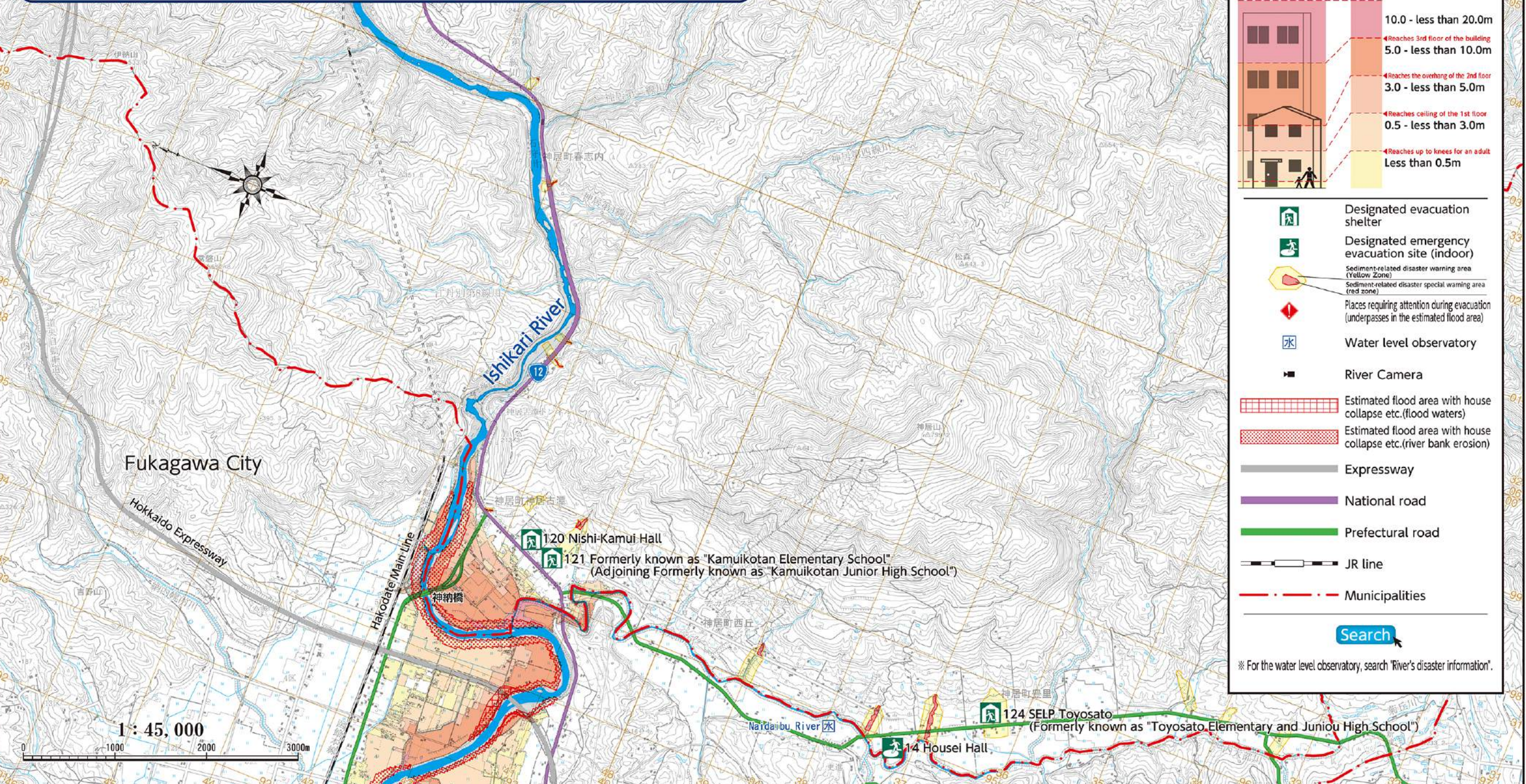
Designated evacuation shelters? Designated emergency evacuation site(indoor) list

No.	Name of facility	Address	Latitude	Longitude	Remarks	District
1	Nishino Elementary School	6-1-10 5-chome	05-3	141-10	0	Nishi
2	Shinmachi Elementary School	4-1-10 5-chome	05-3	141-10	0	Nishi
3	Asahikawa High School Support Institute	5-10 Nishi 5-chome	3-5	141-10	0	Nishi
4	Selun Elementary School	Akeshiro 1-10 2-chome	05-3	141-10	0	Nishi
5	Asahikawa Commercial High School	Akeshiro 3-10 3-chome	05-3	141-10	0	Nishi
6	Asahikawa Higashi High School	6-1-10 11-chome	05-3	141-10	0	Taisetsu
7	Terama Junior High School	6-1-10 16-chome	05-3	141-10	0	Taisetsu
8	Chishin Elementary School	8-10-dori 13-chome	05-3	141-10	0	Taisetsu
9	Chuo Junior High School	10-10-dori 11-chome	05-3	141-10	0	Taisetsu
10	Asahi Elementary School	5-10-dori 21-chome	0	141-10	0	Higashi
11	Toku Community Center	Toku 5-10 2-chome	0	141-10	0	Higashi
12	Toku Junior High School	Toku 8-10 3-chome	0	141-10	0	Higashi
13	Chiyoda Elementary School	Toku 8-10 3-chome	0	141-10	0	Higashi
14	Higashimachi Elementary School	Toyouka 3-10 1-chome	0	141-10	0	Higashi
15	Koyo Junior High School	Toyouka 3-10 1-chome	0	141-10	0	Higashi
16	Asahikawa Ryukoku High School	Toyouka 5-10 1-chome	0	141-10	0	Higashi
17	Toyouka Elementary School	Toyouka 5-10 1-chome	0	141-10	0	Higashi
18	Toyouka Community Center	Toyouka 11-10 3-chome	0	141-10	0	Higashi
19	Keimei Elementary School	Itami 7-10-dori 12-chome	0	141-10	0	Higashi
20	Keimei Community Center	Itami 5-10-dori 25-chome	0	141-10	0	Higashi
21	Toei Elementary School	Toku 4-10 6-chome	0	141-10	0	Higashi
22	3rd Asahikawa Elementary School	Toku 8-10 3-chome	0	141-10	0	Higashi
23	Tomoi Junior High School	Toku 15-10 2-chome	0	141-10	0	Higashi
24	Toku Elementary School	Toku 17-10 2-chome	0	141-10	0	Higashi
25	Toyo Junior High School	Toyouka 2-10 2-chome	0	141-10	0	Higashi
26	Kyoei Elementary School	Toyouka 2-10 2-chome	0	141-10	0	Higashi
27	Miyagi Higashi Elementary School	Toyouka 2-10 2-chome	0	141-10	0	Higashi
28	Atago Elementary School	Toyouka 2-10 2-chome	0	141-10	0	Higashi
29	Atago Junior High School	Toyouka 2-10 2-chome	0	141-10	0	Higashi
30	Asahikawa Elementary School	Itami 5-10-dori 25-chome	-0.5	141-10	0	Higashi
31	Asahikawa Junior High School	Itami 5-10-dori 25-chome	-0.5	141-10	0	Higashi
32	Higashi Asahikawa Rural Environment Improvement Center	Itami 5-10-dori 25-chome	-0.5	141-10	0	Higashi
33	2nd Asahikawa Junior High School	Itami 5-10-dori 25-chome	-0.5	141-10	0	Higashi
34	2nd Asahikawa Elementary School	Itami 5-10-dori 25-chome	-0.5	141-10	0	Higashi
35	Itami Community Center	Itami 5-10-dori 25-chome	-0.5	141-10	0	Higashi
36	Itami Junior High School	Itami 5-10-dori 25-chome	-0.5	141-10	0	Higashi
37	Higashi Asahikawa Community Center Third Branch	Itami 5-10-dori 25-chome	-0.5	141-10	0	Higashi
38	Higashi Asahikawa Community Center Itami Branch	Itami 5-10-dori 25-chome	-0.5	141-10	0	Higashi
39	1st Asahikawa Elementary School	Itami 5-10-dori 25-chome	-0.5	141-10	0	Higashi
40	Takui Elementary School	Itami 5-10-dori 25-chome	-0.5	141-10	0	Higashi
41	Hokko Elementary School	Itami 5-10-dori 25-chome	-0.5	141-10	0	Higashi
42	Hokuso Community Center	Itami 5-10-dori 25-chome	-0.5	141-10	0	Higashi
43	Omachi Elementary School	Omachi 1-10 1-chome	05-3	141-10	0	Hokuso
44	Asahikawa Nishi High School	Ganado 5-10 5-chome	3-5	141-10	0	Hokuso
45	Hokukom Junior High School	Nishikuchi 15-chome	05-3	141-10	0	Hokuso
46	Asahikawa Kita High School	Nishikuchi 15-chome	05-3	141-10	0	Hokuso
47	Asahikawa Toei High School	Nishikuchi 15-chome	05-3	141-10	0	Hokuso
48	Hokkaido University of Education Kamikawa Campus	Hokkaido 15-chome	05-3	141-10	0	Hokuso
49	Asahikawa Meisei High School	Midorinaka 14-chome	05-3	141-10	0	Hokuso
50	Chikabumi Elementary School	Midorinaka 17-chome	3-5	141-10	0	Hokuso
51	Keihoku Junior High School	Shunko 2-10 2-chome	-0.5	141-10	0	Shunko
52	Hokko Junior High School	Shunko 2-10 2-chome	-0.5	141-10	0	Shunko
53	Hokko Junior High School	Shunko 2-10 2-chome	-0.5	141-10	0	Shunko
54	Hokubai Community Center	Shunko 2-10 2-chome	-0.5	141-10	0	Shunko
55	Hokuchin Elementary School	Shunko 2-10 2-chome	-0.5	141-10	0	Shunko
56	Takada Elementary School	Shunko 2-10 2-chome	-0.5	141-10	0	Shunko
57	Nakano Junior High School	Shunko 2-10 2-chome	-0.5	141-10	0	Shunko
58	Shunkoda Community Center	Shunko 2-10 2-chome	-0.5	141-10	0	Shunko
59	Shunkoda Junior High School	Shunko 2-10 2-chome	-0.5	141-10	0	Shunko
60	Shunko Elementary School	Suhiro 1-10 1-chome	05-3	141-10	0	Shunko
61	Rokugo Junior High School	Suhiro 3-10 1-chome	05-3	141-10	0	Shunko
62	Suhiro Elementary School	Suhiro 3-10 1-chome	0	141-10	0	Shunko
63	Asahikawa Jitsugyo High School	Suhiro 3-10 1-chome	0	141-10	0	Shunko
64	Hokusei Junior High School	Saizumi 5-10 1-chome	-0.5	141-10	0	Shunko
65	Koryo Elementary School	Saizumi 5-10 1-chome	-0.5	141-10	0	Shunko
66	Fachokai Community Exchange Home	Shunko 3-10 1-chome	-0.5	141-10	0	Hokuso
67	Poyon Elementary School	Suhiro 1-10 1-chome	-0.5	141-10	0	Hokuso
68	Suhiro Community Center	Suhiro 1-10 1-chome	-0.5	141-10	0	Hokuso
69	Koryo Junior High School	Suhiro 2-10 2-chome	-0.5	141-10	0	Hokuso
70	Suhiro Kita Elementary School	Suhiro 5-10 11-chome	-0.5	141-10	0	Hokuso
71	Suhiro area activity center	Suhiro 5-10 11-chome	-0.5	141-10	0	Hokuso
72	Higashi Takasu Junior High School	Saizumi 11-10 5-chome	05-3	141-10	0	Hokuso
73	1st Chikabumi Elementary School	Itami 5-10-dori 25-chome	-0.5	141-10	0	Hokuso
74	2nd Chikabumi Elementary School	Itami 5-10-dori 25-chome	-0.5	141-10	0	Kamui

Designated emergency evacuation site (indoor) list

No.	Name of facility	Address	Latitude	Longitude	Remarks	District
1	Itami Health Center	Itami 5-10-dori 25-chome	-0.5	141-10	0	Chuo
2	Itami Health Center	Itami 5-10-dori 25-chome	-0.5	141-10	0	Chuo
3	Itami Health Center	Itami 5-10-dori 25-chome	-0.5	141-10	0	Hokuso
4	New Hokkaido Hotel for parking lot and parking lot	Midorinaka 23-chome	05-3	141-10	0	Hokuso
5	Asahikawa Bellco Hall	Itami 5-10-dori 25-chome	-0.5	141-10	0	Kapara
6	Asahikawa Bellco Hall	Itami 5-10-dori 25-chome	-0.5	141-10	0	Kapara
7	Asahikawa Bellco Hall	Itami 5-10-dori 25-chome	-0.5	141-10	0	Kapara
8	Itami Health Center	Itami 5-10-dori 25-chome	-0.5	141-10	0	Kapara
9	Mei no SPA Agency	Itami 5-10-dori 25-chome	-0.5	141-10	0	Kapara
10	Asahikawa Yamane Nursery School	Itami 5-10-dori 25-chome	-0.5	141-10	0	Kapara
11	Kapara Citizens Exchange Center	Itami 5-10-dori 25-chome	-0.5	141-10	0	Kapara
12	Itami Health Center	Itami 5-10-dori 25-chome	-0.5	141-10	0	Kapara
13	Micor Center Garden Center	Itami 5-10-dori 25-chome	-0.5	141-10	0	Kapara
14	House Hall	Itami 5-10-dori 25-chome	-0.5	141-10	0	Kamui

Kamuicho Kamuikotan • Nishioka • Toyosato Area



Higashi Asahikawa Area

