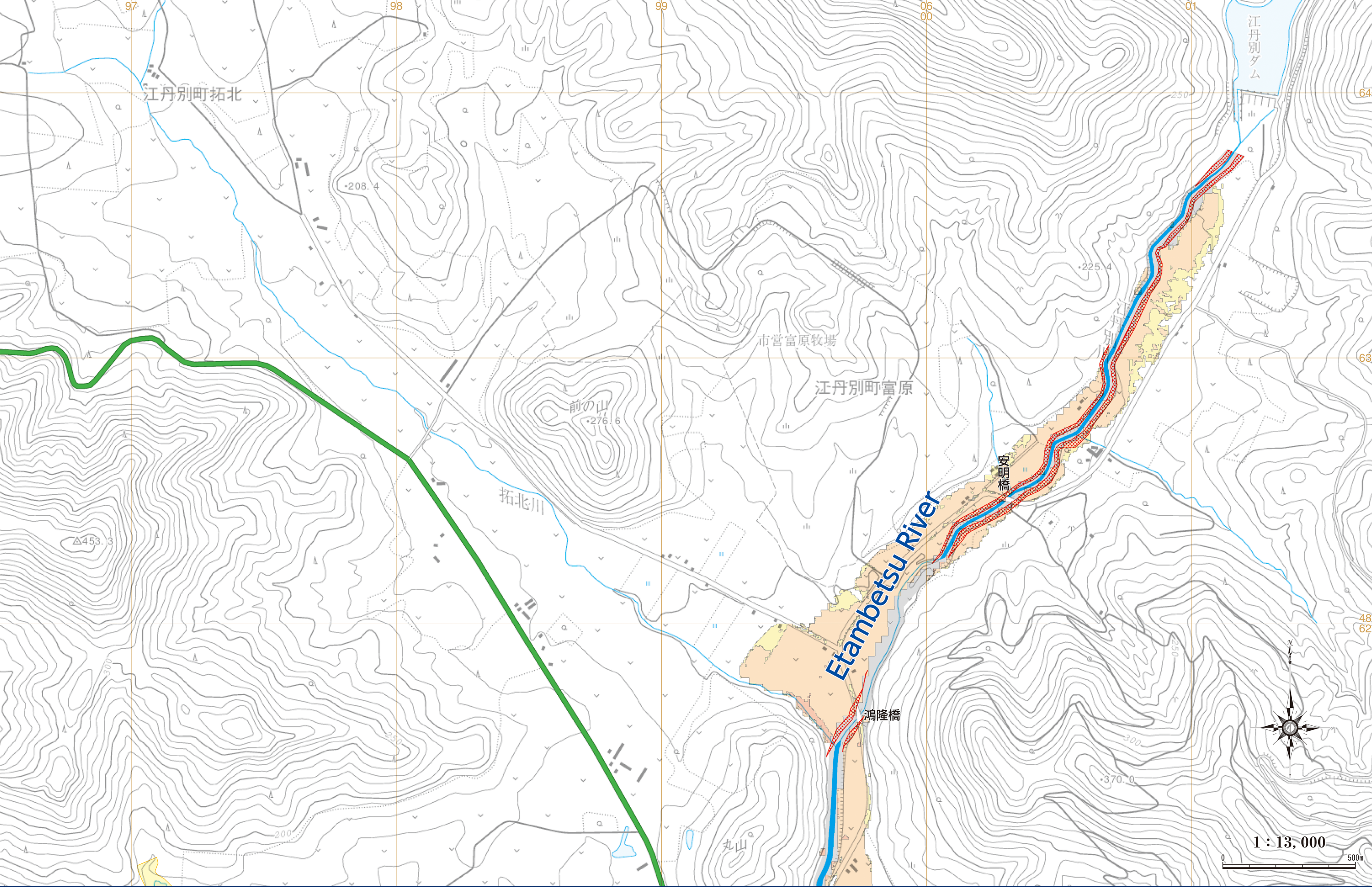


Etambetsucho Chuo / Etambetsucho Nishisato / Etambetsucho Takuhoku / Etambetsucho Tomihara

"This map is based on the Digital Map 25000(Map Image) published by Geospatial Information Authority of Japan
[Approval number jyou-shi 419-GISMAP40259 2017]"



P54

Designated evacuation shelter
 Designated emergency evacuation site (indoor)

Designated emergency evacuation areas (Park)
 Places requiring attention during evacuation (underpasses in the estimated flood area)

Sediment-related disaster warning area (Yellow Zone)
 Sediment-related disaster special warning area (red zone)

Water level observatory
 River Camera

Estimated flood area with house collapse etc.(flood waters)
 Estimated flood area with house collapse etc.(river bank erosion)

Expressway
 National road

Prefectural road
 JR line

Municipalities
 Less than 0.5m

0.5 - less than 3.0m
 3.0 - less than 5.0m
 5.0 - less than 10.0m
 10.0 - less than 20.0m