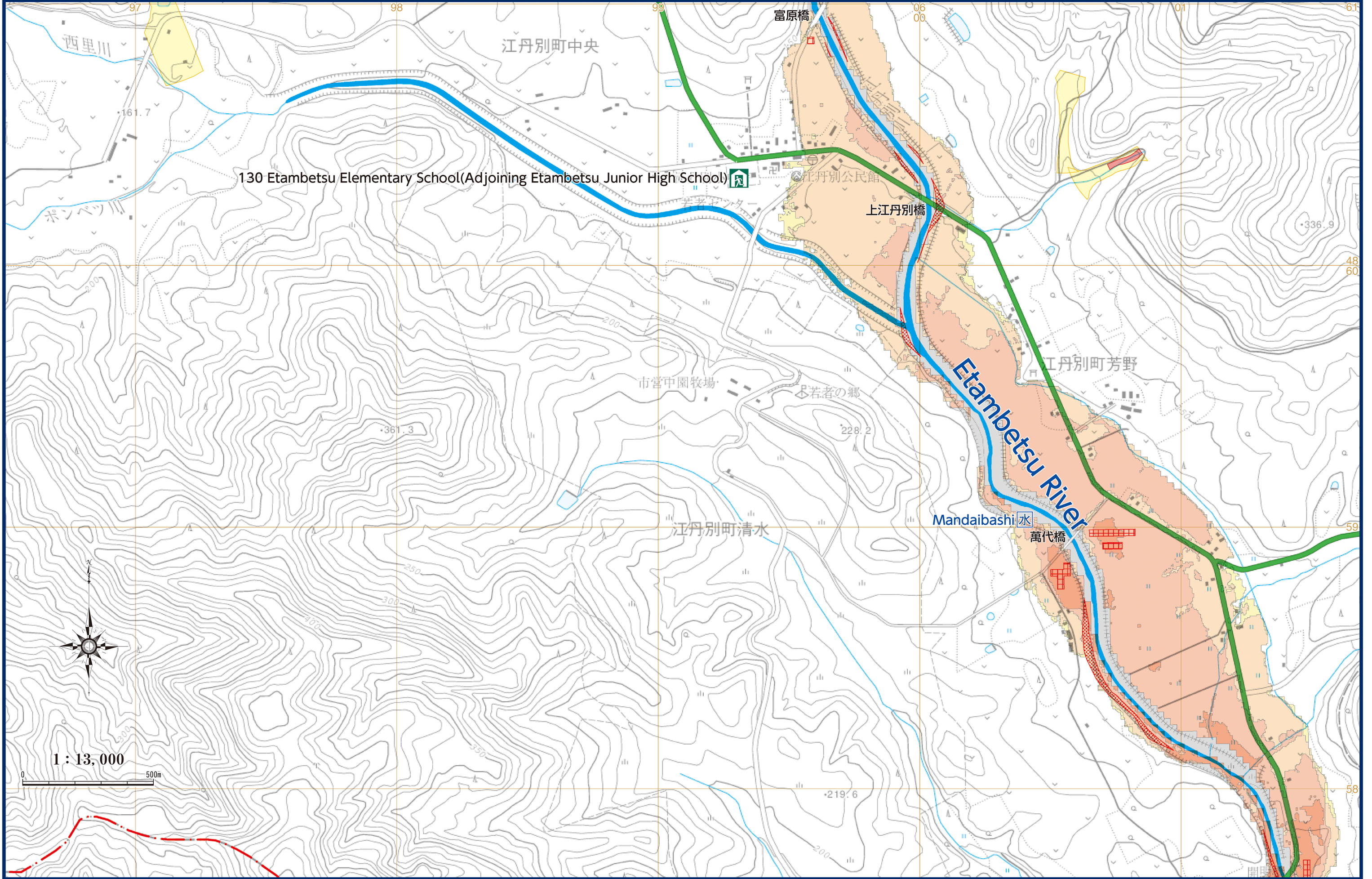


Etambetsucho Yoshino / Etambetsucho Shimizu / Etambetsucho Chuo / Etambetsucho Nishisato

"This map is based on the Digital Map 25000(Map Image) published by Geospatial Information Authority of Japan [Approval number jyou-shi 419-GISMAP40259 2017]"



P53

Designated evacuation shelter	Designated emergency evacuation areas (Park)	Sediment-related disaster warning area (Yellow Zone)	Water level observatory	Estimated flood area with house collapse etc.(flood waters)	Expressway	Prefectural road	Municipalities	0.5 - less than 3.0m	5.0 - less than 10.0m
Designated emergency evacuation site (indoor)	Places requiring attention during evacuation (underpasses in the estimated flood area)	Sediment-related disaster special warning area (red zone)	River Camera	Estimated flood area with house collapse etc.(river bank erosion)	National road	JR line	Less than 0.5m	3.0 - less than 5.0m	10.0 - less than 20.0m