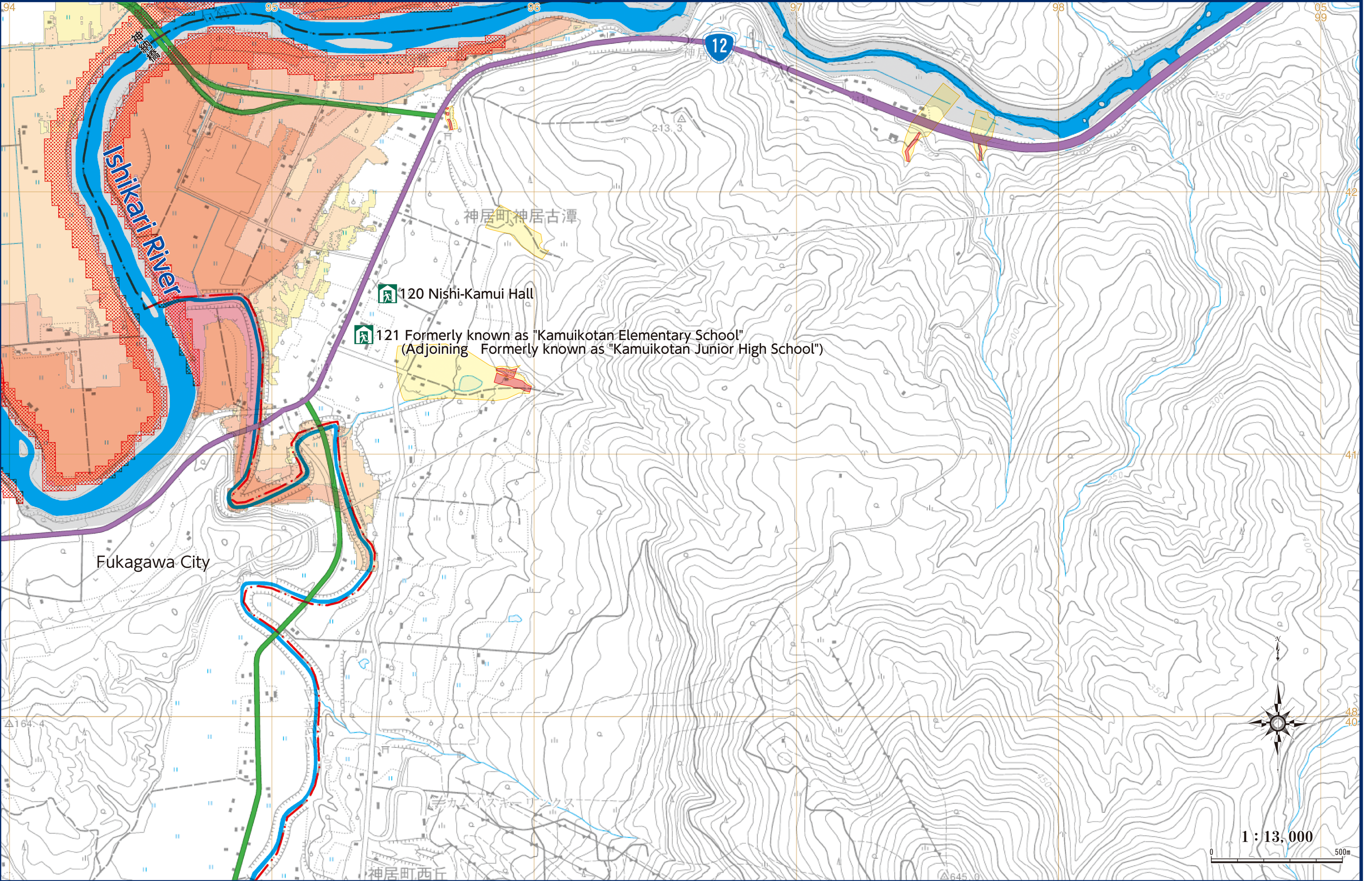


## Kamuicho Kamuikotan / Kamuicho Nishioka

"This map is based on the Digital Map 25000(Map Image) published by Geospatial Information Authority of Japan  
[Approval number jyou-shi 419-GISMAP40259 2017]"



## P47



Designated evacuation shelter



Designated emergency evacuation site (indoor)



Designated emergency evacuation areas (Park)



Places requiring attention during evacuation  
(underpasses in the estimated flood area)



Sediment-related disaster warning area  
(Yellow Zone)



Sediment-related disaster special warning area (red zone)




Water level observatory




River Camera



 Estimated flood area with house collapse etc.(flood waters)



 Estimated flood area with house collapse etc.(river bank erosion)



Expressway



— National road



— Prefectural road

 JR line

- Municipalities

Less than 0.5m



0.5 - less than 3.0m



3.0 - less than 5.0m



5.0 - less than 10.0m



10.0 - less than 20.0m