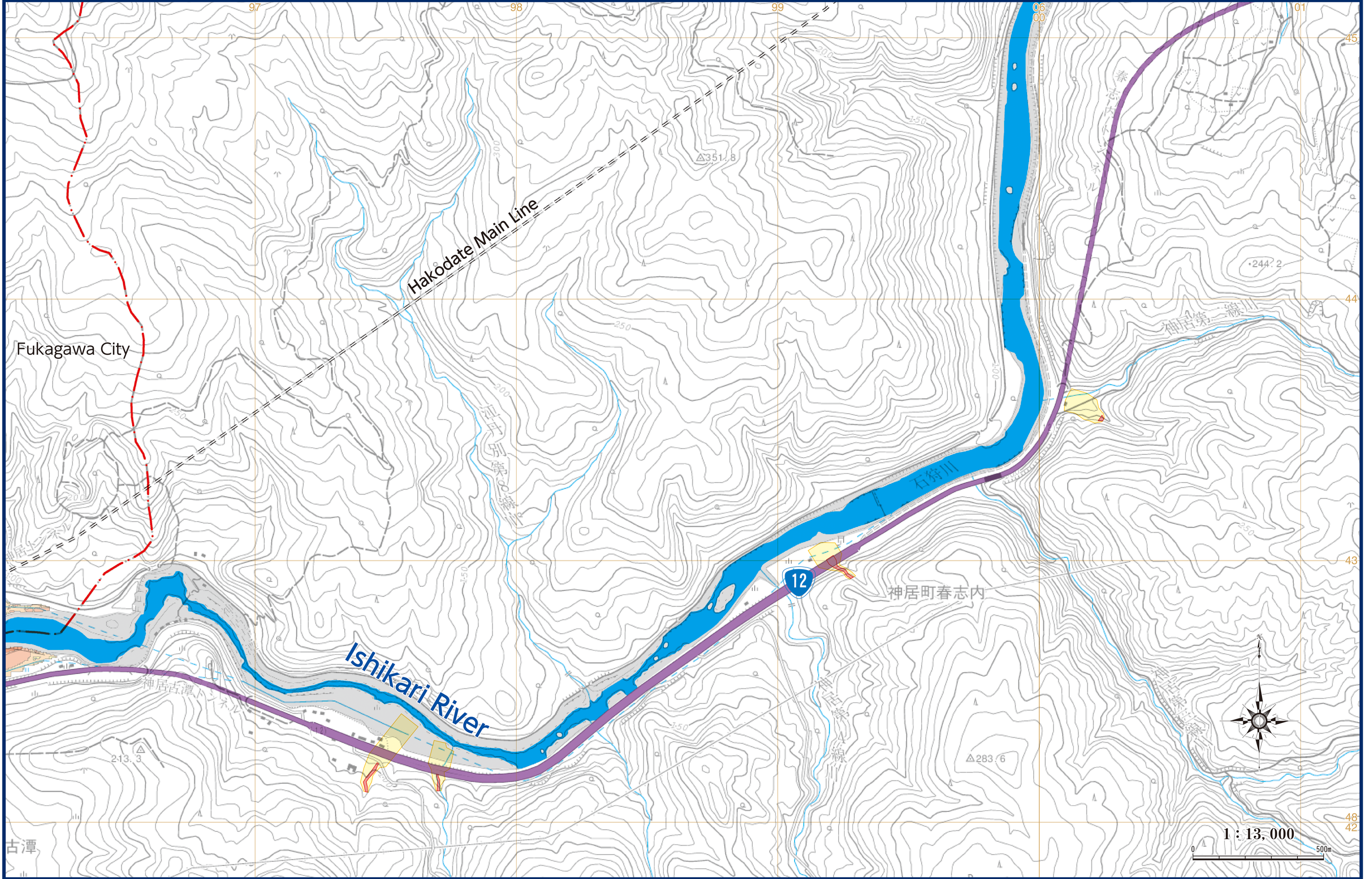


# Kamuicho Harushinai / Kamuicho Kamuikotan

"This map is based on the Digital Map 25000(Map Image) published by Geospatial Information Authority of Japan [Approval number jyou-shi 419-GISMAP40259 2017]"



P46

- |   |  |   |                         |  |               |                  |                |                      |                        |
|---|--|---|-------------------------|--|---------------|------------------|----------------|----------------------|------------------------|
| Designated evacuation shelter                 | Designated emergency evacuation areas (Park)   | Sediment-related disaster warning area (Yellow Zone)      | Water level observatory | Estimated flood area with house collapse etc. (flood waters)       | Expressway    | Prefectural road | Municipalities | 0.5 - less than 3.0m | 5.0 - less than 10.0m  |
| Designated emergency evacuation site (indoor) | Places requiring attention during evacuation (underpasses in the estimated flood area) | Sediment-related disaster special warning area (red zone) | River Camera            | Estimated flood area with house collapse etc. (river bank erosion) | National road | JR line          | Less than 0.5m | 3.0 - less than 5.0m | 10.0 - less than 20.0m |