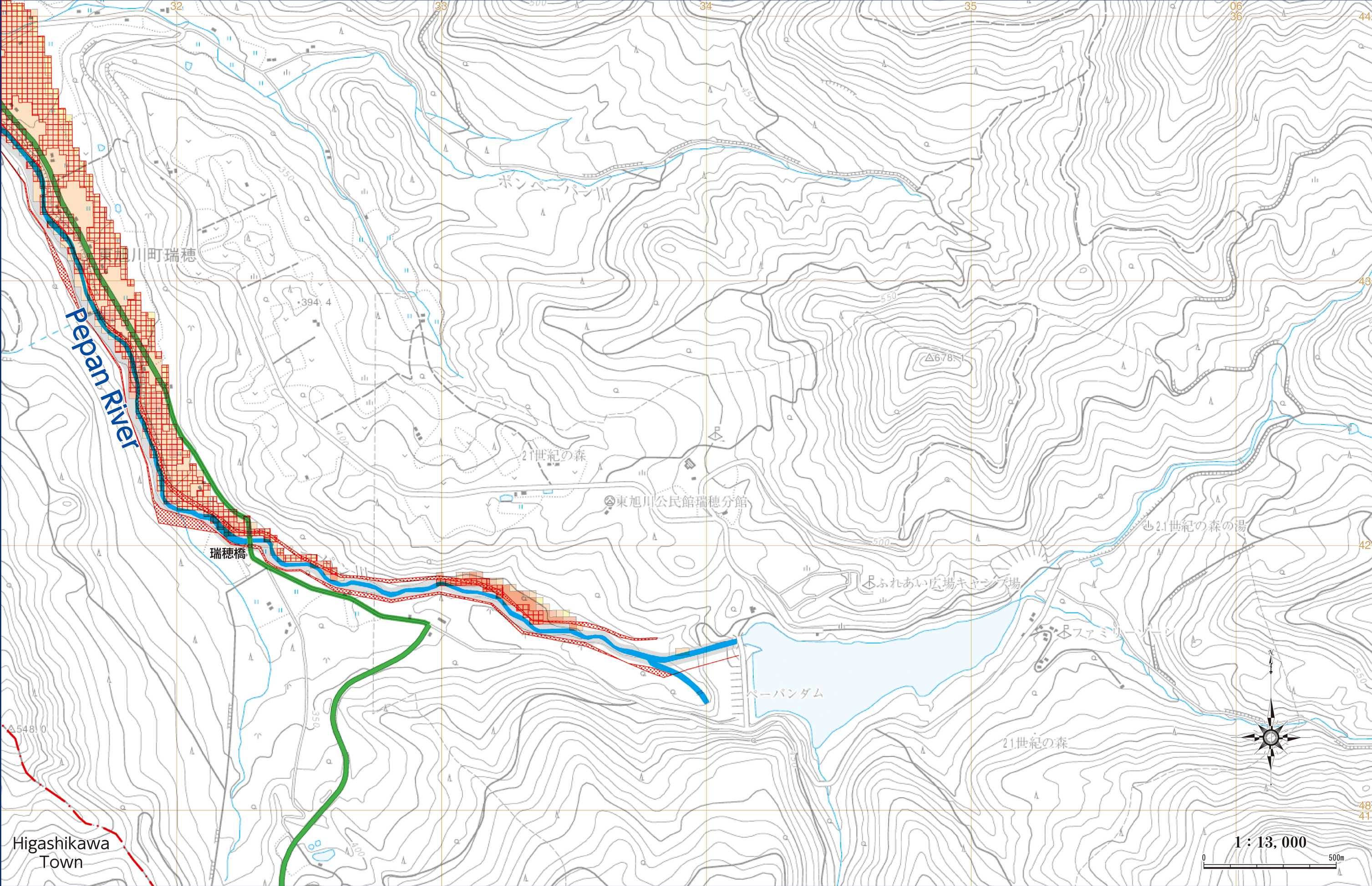


## Higashi Asahikawacho Mizuho / Forest Of The 21st Century

"This map is based on the Digital Map 25000(Map Image) published by Geospatial Information Authority of Japan  
[Approval number jyou-shi 419-GISMAP40259 2017]"



## P30



Designated evacuation shelter

Designated emergency  
evacuation site (indoor)

Designated emergency evacuation areas (Park



Places requiring attention during evacuation  
(underpasses in the estimated flood area)



Sediment-related disaster warning are (Yellow Zone)



sediment-related disaster special warning area (red zone)




Water level observator



River Camera



 Estimated flood area with h  
collapse etc.(flood waters)



 Estimated flood area with h  
collapse etc.(river bank eros



Expressway



— National road



— Prefectural road

 JR line

- Municipalities

Less than 0.5m



0.5 - less than 3.0



■ 3.0 - less than 5.0



5.0 - less than 10.0



10.0 - less than 20.0