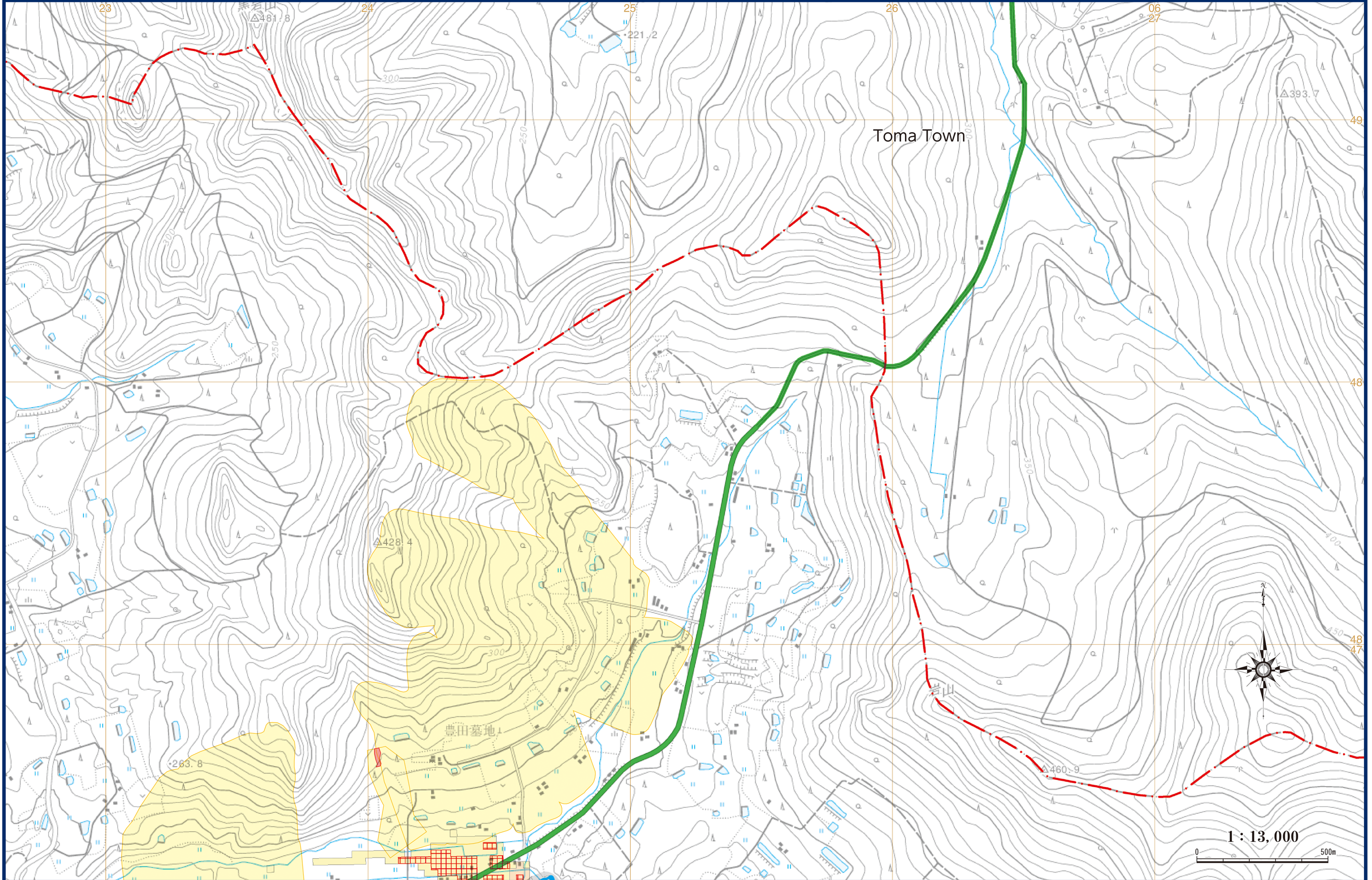


Higashi Asahikawacho Toyota / Higashi Asahikawacho Yonehara

"This map is based on the Digital Map 25000(Map Image) published by Geospatial Information Authority of Japan [Approval number jyou-shi 419-GISMAP40259 2017]"



P27

- | | | | | | | | | | |
|-----------------------------------------------|----------------------------------------------------------------------------------------|-----------------------------------------------------------|-------------------------|--------------------------------------------------------------------|---------------|------------------|----------------|----------------------|------------------------|
| Designated evacuation shelter | Designated emergency evacuation areas (Park) | Sediment-related disaster warning area (Yellow Zone) | Water level observatory | Estimated flood area with house collapse etc. (flood waters) | Expressway | Prefectural road | Municipalities | 0.5 - less than 3.0m | 5.0 - less than 10.0m |
| Designated emergency evacuation site (indoor) | Places requiring attention during evacuation (underpasses in the estimated flood area) | Sediment-related disaster special warning area (red zone) | River Camera | Estimated flood area with house collapse etc. (river bank erosion) | National road | JR line | Less than 0.5m | 3.0 - less than 5.0m | 10.0 - less than 20.0m |